

**Model No.**  
**GM-4**

The end of GM-4 with XLR  
and without any cable .

**Specification:**

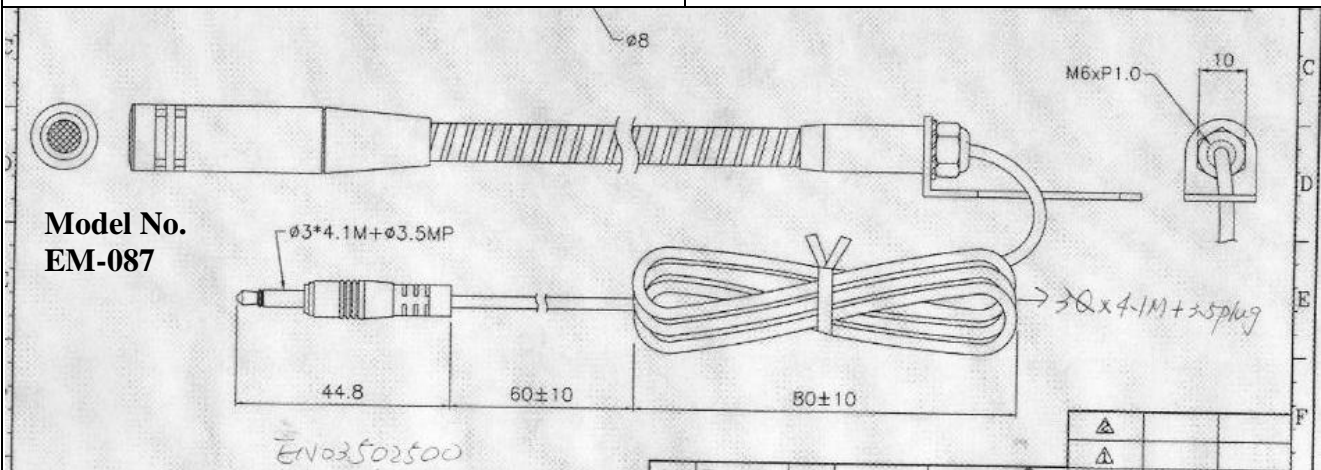
**Frequency Response:** 100-16KHz

**Sensitivity:** -68dB±3dB(0dB=1V #bar, 1KHz)

**Output Impedance:** 1K ±30%

**Type:** Uni-directional Condenser

**Power Supply:** DC 1.5-9V(From Extra Power in)



**Model No.**  
**EM-087**

**Specification:**

**Frequency Response:** 100-16KHz

**Sensitivity:** -68dB±3dB(0dB=1V #bar, 1KHz)

**Output Impedance:** 1K ±30%

**Type:** Uni-directional Condenser

**Power Supply:** DC 1.5-9V(From Extra Power in)